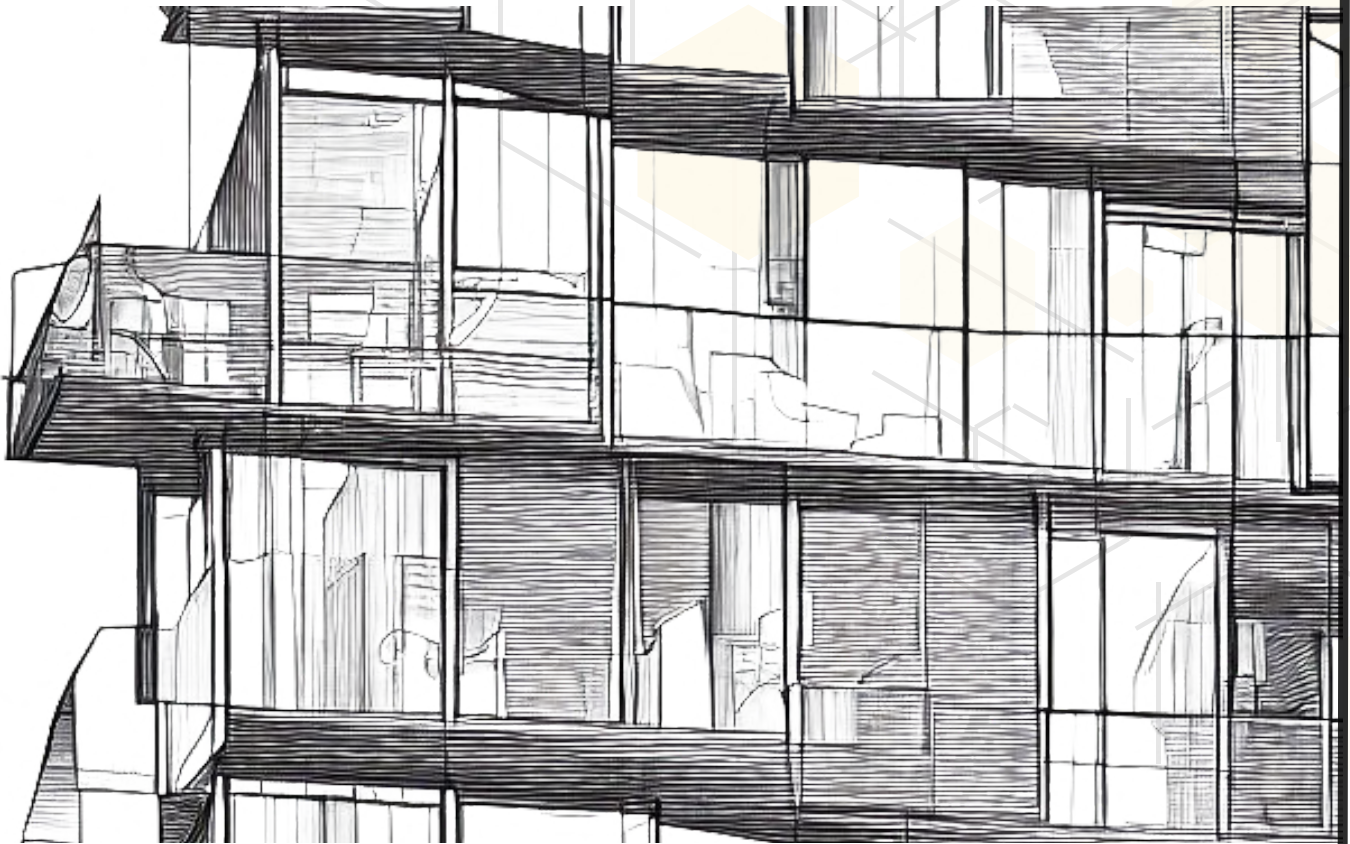


INTRODUCTION



Welcome to **Architopia**, an exclusive design competition hosted by **DiscoverArch**, tailor-made for students in their 1st to 3rd year of architecture and design studies. Architopia invites you to embark on a unique journey where you can unleash your creativity in crafting the ultimate dream home for an architect. The focus is on exceptional design, innovative presentation, and the incorporation of fire safety and security features as bonus points. Display your architectural prowess and creativity in creating a masterpiece that not only represents your profession but also underscores safety and elegance.

"Designing Dreams: Crafting the Ideal Home for an Architect"

CHALLENGE

Participants are tasked with designing a residential project that serves as the dream home for an architect. This includes the main house, living spaces, bedrooms, and any additional features you envision an architect's dream home would possess. You also have the option to choose your idol architect and design a dream house for them. Emphasize creativity, innovation, and attention to detail.

SITE SELECTION



Participants should select a suitable site within an urban or suburban context of a maximum area of 1 acre. Accessibility, proximity to public transport hubs, and the potential for urban placemaking should be factored in, ensuring a seamless integration into the community. Crucially, participants should consult local by-laws and building codes.

THE SIGNIFICANCE OF FSAI

We recognize the pivotal role of the Fire and Security Association of India (FSAI) in promoting and enhancing fire safety and security measures across the nation. In the context of this unique competition, it's essential to understand how FSAI's mission aligns with your role as a designer.

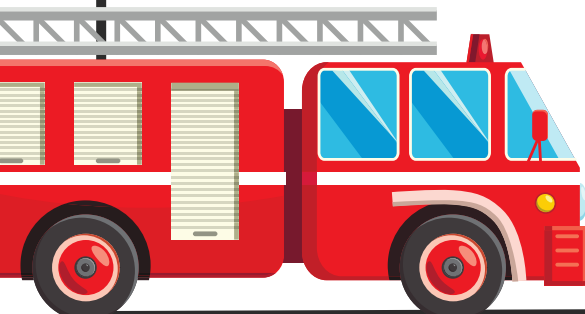
Emphasize Fire-Resistant Materials: Encourage the use of fire-resistant materials in the designs. Participants should consider the selection of materials that can withstand fires, such as fire-resistant cladding, insulation, and roofing.

Response Time and Fire Safety Access: In addition to the aesthetic and safety aspects, we encourage participants to prioritize quick access for emergency services, especially in fire safety scenarios. Design should facilitate easy entry for fire trucks and personnel, aiding efficient fire management.

Pathways and Accessibility: Participants are encouraged to carefully plan the layout of the dream home and its surroundings to ensure that there are clear and unobstructed pathways for firefighters.

The Harmony of Design and Safety: Consider that the harmonious relationship between design and safety is a central theme. FSAI's presence in the competition underscores the idea that safety features need not compromise the aesthetics of a design but can enhance it.

Fire-Resistant Landscaping: Consider landscaping choices that help mitigate the spread of fires. Fire-resistant plants, proper spacing, and the inclusion of firebreaks are vital elements in fire safety design.



JUDGING CRITERIA

ARCHITECTURAL AESTHETICS

Create a visually stunning and harmonious design that reflects the unique tastes and personality of an architect.

INNOVATIVE FEATURES

Integrate innovative architectural elements and sustainable features, to showcase your creativity.

SPATIAL PLANNING

Optimize the use of space within the house to provide functional, comfortable, and aesthetically pleasing spaces.

PRESENTATION QUALITY

Pay careful attention to the clarity, visual appeal, and storytelling aspect of your sheets.

EARN BONUS POINTS

FIRE SAFETY AND SECURITY

FIRE-SAFE MATERIALS

Utilize fire-resistant materials and construction methods to enhance the safety of the house.

REFUGE AREA

Evaluate the inclusion of safe refuge areas within the design to provide a temporary haven for residents during a fire emergency.

SUBMISSION

- The project must be submitted using two (2) A1-sized sheets, whether in digital or hand-drawn format.
- Floor plans to should show furniture arrangements.
- Materials and innovative construction techniques
- Site plan should show the orientation and connectivity of the building
- Elevations and sections of the building.
- All drawings should be presented at a scale

SCHEDULE



Competition
Starts



Early Bird
Registration Ends



Standard
Registration Ends



Submission
Deadline



Winner
Announcement

PRIZES

PRIZES WORTH 10000 RS



10 HONOURABLE MENTIONS

HONOURABLE MENTIONS WILL GET APPRECIATION
CERTIFICATES AND WILL BE PUBLISHED ON DISCOVERARCH
WEBSITE

PARTICIPATION CERTIFICATES

To show our appreciation, all the participants would receive a
participation certificate.

RULES AND REGULATION

1. Eligibility Criteria:

Only architecture students are eligible to participate. Proof of current academic standing will be required at the time of winner declaration.

2. Submission Deadline:

The deadline for all submissions is April 21, 2024. Entries received after this date will not be considered.

3. Registration Fee:

The registration fee is non-refundable. Participants are required to complete the registration process before the specified deadline to be eligible for the competition.

4. Communication Language:

English is the designated language for all communication related to the competition. Participants should ensure that all written communication, including project descriptions, is in English.

5. Submission Format:

Both hand-drafted and digital sheets are accepted for submission. Participants can choose the medium that best suits their design.

6. Jury Contact Prohibition:

Under no circumstances should participants contact the jury. Any attempt to influence the jury or seek feedback during the competition may result in disqualification.

7. Adherence to Rules and Regulations:

All participants are required to adhere to the competition's rules and regulations. Failure to comply may result in disqualification from the competition.

8. Design Explanation for Selected Participants:

Selected participants will be required to provide a detailed explanation of their design to the jury. This explanation will be a crucial factor in the final evaluation for selecting the winners.

9. Competition Schedule Adjustment:

DISCOVER ARCH retains the right to adjust the competition schedule. Participants will be notified promptly of any changes.

ADDITIONAL OPPORTUNITY

All participants will have the opportunity to attend live webinars on fire, security, and architecture conducted by industry experts. Participants who attend the webinar will also receive a certificate of participation in this educational event.



COMING
SOON

COMING
SOON